



—Offering our patients the new type of medical treatment—

Clinic Chikusa Hills



Clinic Chikusa Hills

Center for Immune Regenerative Medicine

Internal medicine • Surgery • Orthopedic surgery •

Dermatology • General internal medicine

**Chikusa Towerhills 1F,2-24-2, Chikusa,
Chikusa-ku, Nagoya, Aichi, 464-0858, Japan**

TEL : 052-753-7935 / FAX : 052-745-6882

E-MAIL : info@clinic-chikusahills.com

URL : <http://www.clinic-chikusahills.com>

Treatment information

Medical care covered by National Insurance

Outpatient:

General internal medicine, internal medicine, orthopedic surgery, dermatology

Specialty outpatient:

Cancer immunotherapy • tumor treatment, rheumatism treatment • bone and joint surgery, sports medicine and orthopedic surgery, gastroenterological medicine • Helicobacter pylori, smoking cessation, pain therapy • herb treatment, metabolic syndrome, diabetes • cardiovascular internal medicine



Medical care covered by private insurance

Immune checkpoint inhibitor (Opdivo, Yervoy)

Physical examination (premium and specialized examination)

Anti-aging medicine (infusion therapy of highly concentrated vitamin C, placenta, Kanmpo massage, Botox, Glutathione therapy)

Outpatient for second opinions

Ultrasound diagnosis and medical treatment.

Center for Immune Regenerative Medicine

With its 'Personal Cell System,' the Center for Immune Regenerative Medicine was established in July 2017. Its doctors keep abreast of the latest medical research and provide the safest and most advanced treatments. To obtain the best possible outcomes, treatment is provided according to each patient's symptoms.

Services Description :

1. Extensive medical care from cancer immune cell therapy to anti-aging care
2. Ministry of Health, Labour and Welfare approved pre-eminent regenerative medicine
3. High quality and cost-effective cell processing technology in our own cell processing center
4. Clinical research jointly conducted with other clinical institutions including universities
5. Member of JAPSAM Research Society for PRP stem cell
6. Education and training of medical technicians

Treatment information :

1. Immune cell therapy

Immune cell therapies include activated lymphocyte therapy (RNAT), activated NK cell therapy (RNANK), tumor specific activated lymphocyte therapy (PTRNAT), tumor specific dendritic cell therapy (PTDC). From among these therapies, the best one is selected in consultation with the patient based on blood test results.

An onsite cell culturing and processing facility is licensed to produce specific cells under the Act on the Safety of Regenerative Medicine. Skilled cell processing technicians handle patients' immune cells under precise processing techniques in compliance with safety control standards.

(Facility number : 140005)



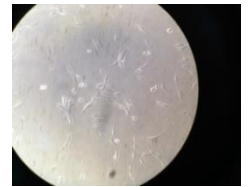
2. PRP therapy

PRP (Platelet-Rich Plasma) therapy is conducted via the collection of the patient's own blood platelets which are concentrated and then re-administered to the patient. The concentrated platelets contain an abundance of constituents such as growth factors that promote cell regeneration of different kinds. Masahiro Tanaka, a major league pitcher for the New York Yankees, received this treatment for a partially torn UCL and made a full recovery.



3. Stem cell therapy

Autologous stem cell therapy is conducted via the collection of a patient's own fat which is separated and cultured into Mesenchymal stem cells. These cells have a high capability to repair and regenerate various types of tissue. This therapy has minimal side effects because it utilizes the patients' own tissue. The drawback is the lengthy period required for culturing. **'Stem Cell Banking'** which preserves the collected stem cells in an aseptic freezer, is available. In the near future, Allogeneic stem cell therapy will be added to the list of available therapies.



Fields and disorders:

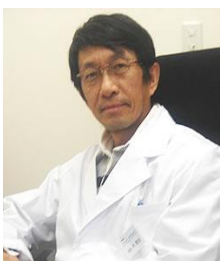
- * Orthopedic surgery: arthrosis, sports injury, cancer
- * Cosmetic surgery: face-lift, spot removal, anti-aging treatment such as amelioration of skin conditions
- * Gastroenterological medicine: liver ailments such as cirrhosis and cancer
- * Respiratory medicine: cancer
- * Neurosurgery: dementia after the onset of cerebral infarction, Alzheimer's disease, Parkinson's disease, cancer
- * Collagen disease: atopic dermatitis, chronic fatigue syndrome
- * Gynecology: cancer

Approved immune regenerative therapy :

With pre-approval from the Certified Committee for Regenerative Medicine operating under the Act on Safety of Regenerative Medicine, the clinic's regenerative medicine provision plan was submitted to and accepted by the Tokai-Hokuriku Regional Bureau of Health and Welfare.

- * Active lymphocytes therapy (cancer)
- * Tumor-specific dendritic cell therapy (cancer)
- * PRP therapy (anti-aging treatment, osteoarthritis)
- * Adipose-derived stem cell therapy (cirrhosis, anti-aging treatment, osteoarthritis)
- * Adipose-derived stem cell therapy (cerebral infarction, dementia, atopic dermatitis)

Doctors' profiles



Hospital director
Dr. Shuji Hayashi

Graduated from the Nagoya Univ., Faculty of Medicine MD
[specialty] gastroenterological surgery transplantation regenerative medicine



Dr. Masataka Deie

Graduated from the Hiroshima Univ., School of Medicine, Graduate School of Medical Science MD
[specialty] Knee joint Sports medicine



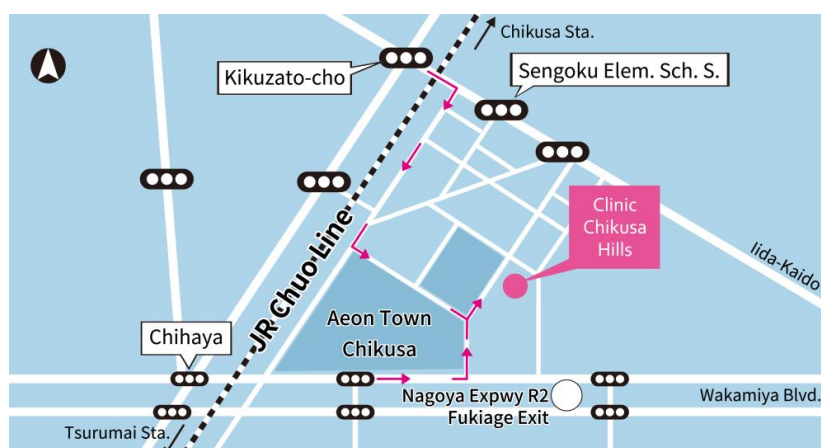
Dr. Hisashi Iwata

Graduated from the Nagoya Univ., Faculty of Medicine MD
[specialty] rheumatism, knee joint, hip joints, osteoporosis, spinal canal stenosis

Consultation hours

		MON	TUE	WED	THU	FRI
9:00 ~ 12:00	General outpatient	○	○	○	○	○
	Specialty outpatient	Cancer immunotherapy Tumor	Diabetes Metabolic syndrome	Rheumatism Bone and joint surgery	Pylorus infection Smoking cessation	Regenerative medicine
	Immune cell therapy (private insurance)	○	○	○	○	○
	Physical examination	○	○	○	○	○
15:00 ~ 18:00	General outpatient	○	○	○	○	○
	Specialty outpatient	Stomach and intestines Liver		Pain treatment Herb treatment		Stem cell therapy
	Immune cell therapy (private insurance)	○	○	○	○	○
	Physical examination	○	○	○	○	○

Access



【By train or subway】

- JR Chuo Line Tsurumai Line, Tsurumai station (10-minute walk)
- Higashiyama Line, Chikusa station (15-minute walk)
- Sakuradori Line, Fukiage station (10-minute walk)

【By bus】

- Sakae #17 bus, Chihaya stop (3-minute walk)

【By car】

- About three minutes from Fukiage East Exit of Nagoya Highway
- About five minutes from Fukiage West Exit of Nagoya Highway

Note: streets around the clinic are all one-way.

【By taxi】

- About a 20-minute ride from Sakuradori Exit of Nagoya station

Contact

Please contact us for appointments for immune regenerative therapy consultations

Clinic Chikusa Hills

Chikusa Towerhills 1F, 2-24-2, Chikusa, Chikusa-ku, Nagoya, Aichi, 464-0858, Japan

TEL: 052-753-7935 / FAX : 052-745-6882

E-mail: info@clinic-chikusahills.com

Web: <http://www.clinic-chikusahills.com>

Consultation hours: MON-FRI 9:00-12:00/15:00-18:00(Closed: Saturdays, Sunday, and National Holidays)

